

Flower Patch Baby Quilt

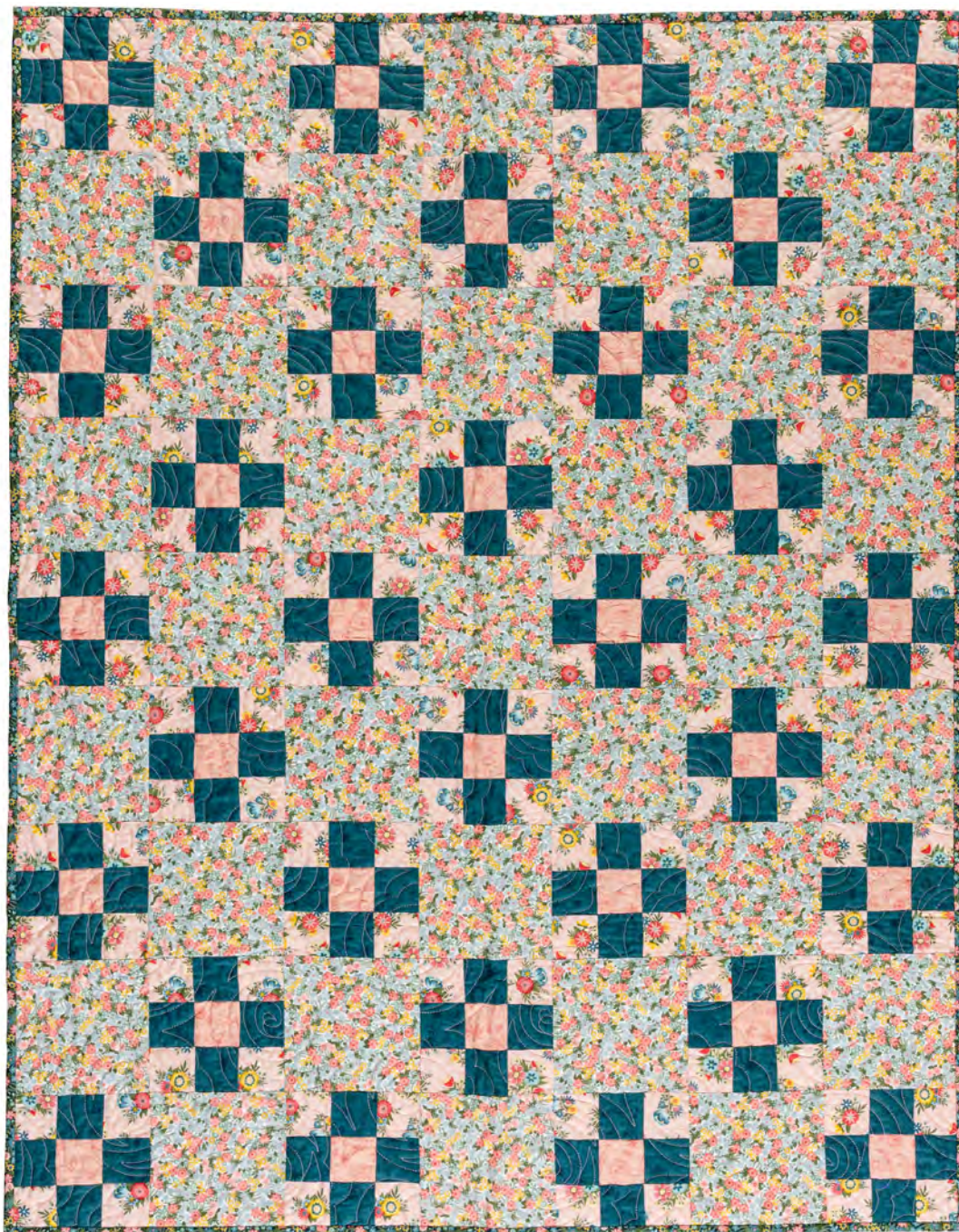
DESIGNED BY: Quilt Street Exclusive

Flower Patch Baby Quilt

DESIGNED BY: QUILT STREET EXCLUSIVE

FINISHED QUILT SIZE: 42½" x 54½"

FINISHED BLOCK SIZE: 6" x 6"



FABRIC: *Vintage Flora* by Maywood Studio

This quilt pattern is quick and easy to make and perfect for the first-time quilter using a Nine Patch block combined with same-size fabric patches. Enjoy the process of making this quilt for the first time to commemorate a newborn baby. Also, be sure to come back and use this quilt pattern repeatedly; this is not a quilt pattern just for little ones. Consider making this pattern for throw-size quilts for any gift-giving occasion.

Flower Patch Baby Quilt

SPECIAL INSTRUCTIONS:

Read through entire pattern before beginning project. Use $\frac{1}{4}$ " seam allowances with fabric right sides together. Pressing arrows are included with illustrations. Basic quilting supplies are assumed. Fabric requirements include extra yardage for shrinkage and insurance. If working with directional prints, you may want to begin with more fabric than called for.

WOF = width of fabric

LOF = length of fabric

FABRIC:

Fabric A: $\frac{3}{4}$ yard pink floral print (MAS10331-P)

Fabric B: $\frac{3}{4}$ yard navy tone-on-tone floral print (MAS10334-B)

Fabric C: $\frac{1}{4}$ yard pink tone-on-tone floral print (MAS10334-P)

Fabric D: $1\frac{1}{4}$ yards multi floral on white (MAS10333-K)

Fabric E: $\frac{1}{2}$ yard navy multi floral (MAS10333-N)

Backing: 3 yards (for 45"-wide) or
 $1\frac{1}{2}$ yards (for 108"-wide) fabric

ADDITIONAL SUPPLIES:

Batting, 52" x 64" piece

CUTTING:

From Fabric A, cut:

- (8) $2\frac{1}{2}$ " x WOF strips

From Fabric B, cut:

- (8) $2\frac{1}{2}$ " x WOF strips

From Fabric C, cut:

- (2) $2\frac{1}{2}$ " x WOF strips

From Fabric D, cut:

- (6) $6\frac{1}{2}$ " x WOF strips. From strips, cut:
 - (31) $6\frac{1}{2}$ " x $6\frac{1}{2}$ " squares

From Fabric E, cut:

- (6) $2\frac{1}{2}$ " x WOF strips

BLOCK ASSEMBLY:

1 Referring to **Diagram 1**, lay out (2) **Fabric A** $2\frac{1}{2}$ " x WOF strips and (1) **Fabric B** $2\frac{1}{2}$ " x WOF strip. Sew strips together into **A/B/A Strip Set** and press as shown. Make 4. In the same manner, lay out (2) **Fabric B** $2\frac{1}{2}$ " x WOF strips and (1) **Fabric C** $2\frac{1}{2}$ " x WOF strip. Sew strips together into **B/C/B Strip Set**. Make 2. From **Strip Sets**, cut (64) $2\frac{1}{2}$ " x $6\frac{1}{2}$ " **A/B/A** pieced rectangles and (32) $2\frac{1}{2}$ " x $6\frac{1}{2}$ " **B/C/B** pieced rectangles.

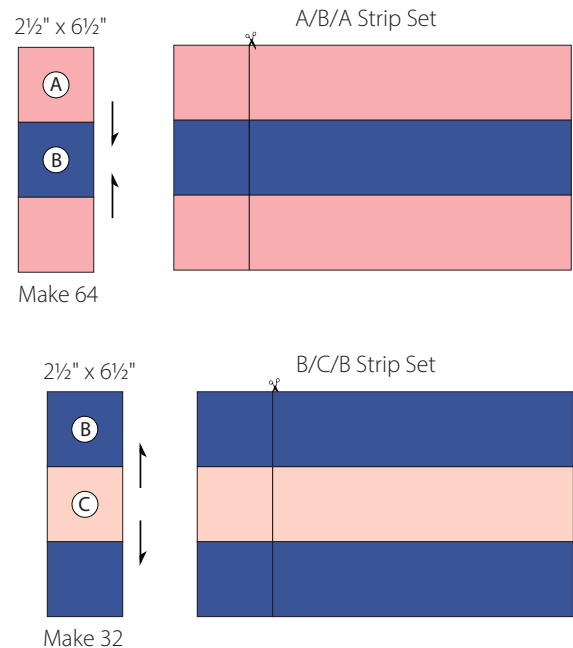


DIAGRAM 1

2 Lay out (2) **A/B/A** pieced rectangles and (1) **B/C/B** pieced rectangle (**Diagram 2**). Sew rows together to make **Nine Patch Block**. Make 32.

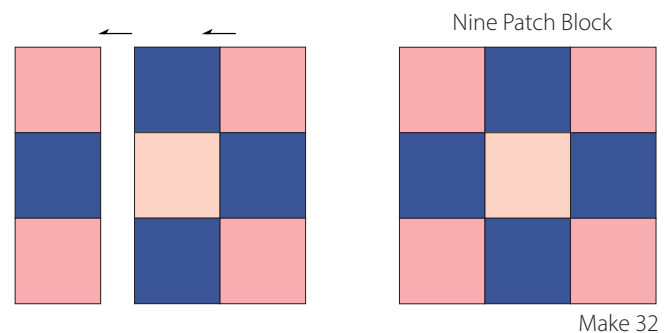


DIAGRAM 1

QUILT ASSEMBLY

3 Referring to **Quilt Assembly Diagram**, lay out 9 rows of (32) **Nine Patch Blocks** and (31) **Fabric D** $6\frac{1}{2}$ " squares. Sew together into rows. Sew rows together to complete **Flower Patch quilt top**.

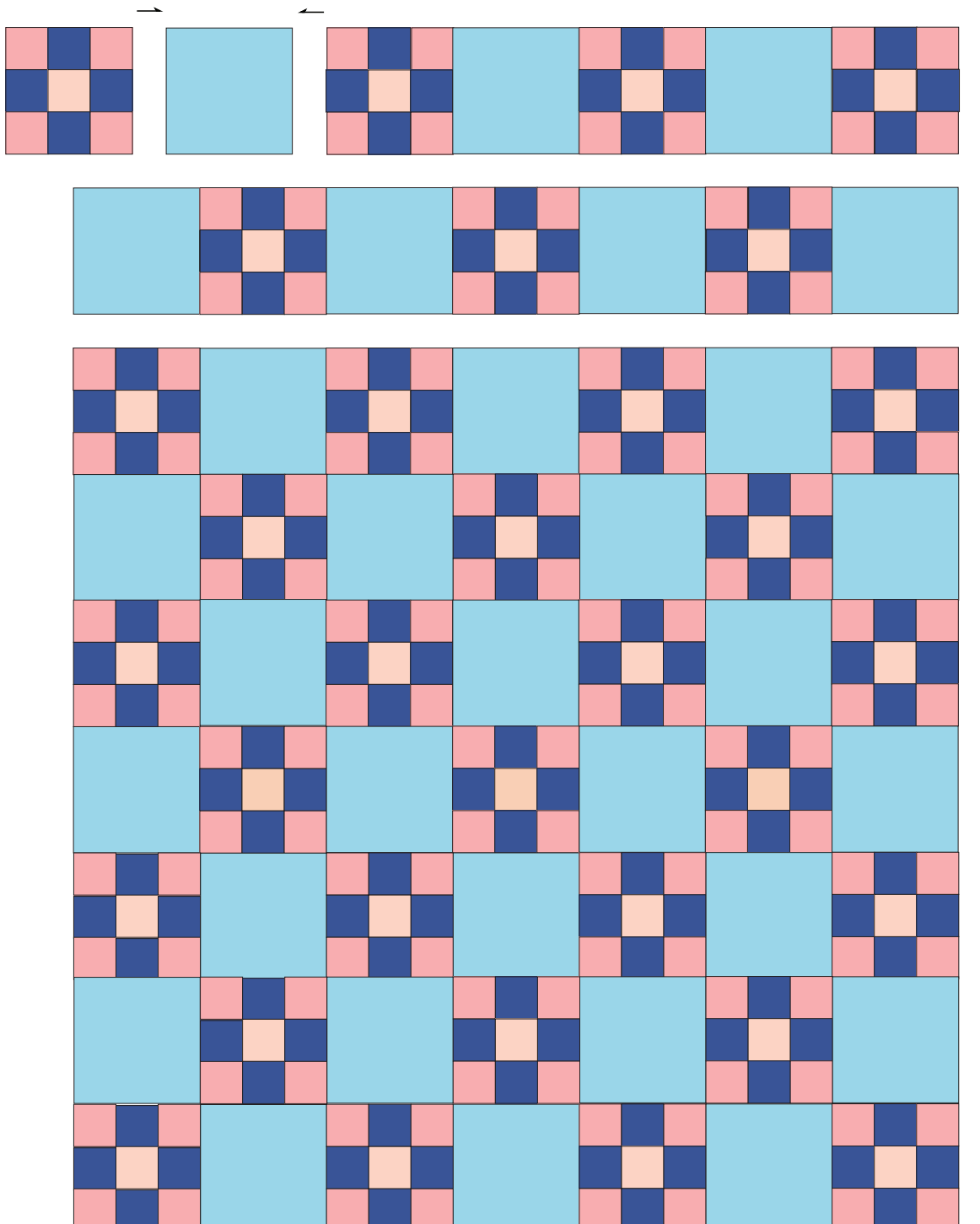
Flower Patch Baby Quilt

FINISHING:

4 Trim selvage edges from 3 yards of backing fabric and cut into (2) 52" x WOF pieces. Sew pieces together horizontally along LOF; press seam to one side.

5 Center and layer backing, batting, and quilt top together to make a quilt sandwich. Baste layers together and quilt as desired. Trim batting and backing even with quilt top.

6 Using diagonal seams, make **Fabric E** binding from (6) 2½" x WOF strips. Fold binding in half lengthwise, matching wrong sides; press length. Sew binding to quilt top and miter corners; join binding ends as desired. Press binding away from quilt top and fold over quilt's edge to back of quilt. Hand-stitch binding in place to finish.



QUILT ASSEMBLY DIAGRAM