

Aiden Court

DESIGNER: Unknown



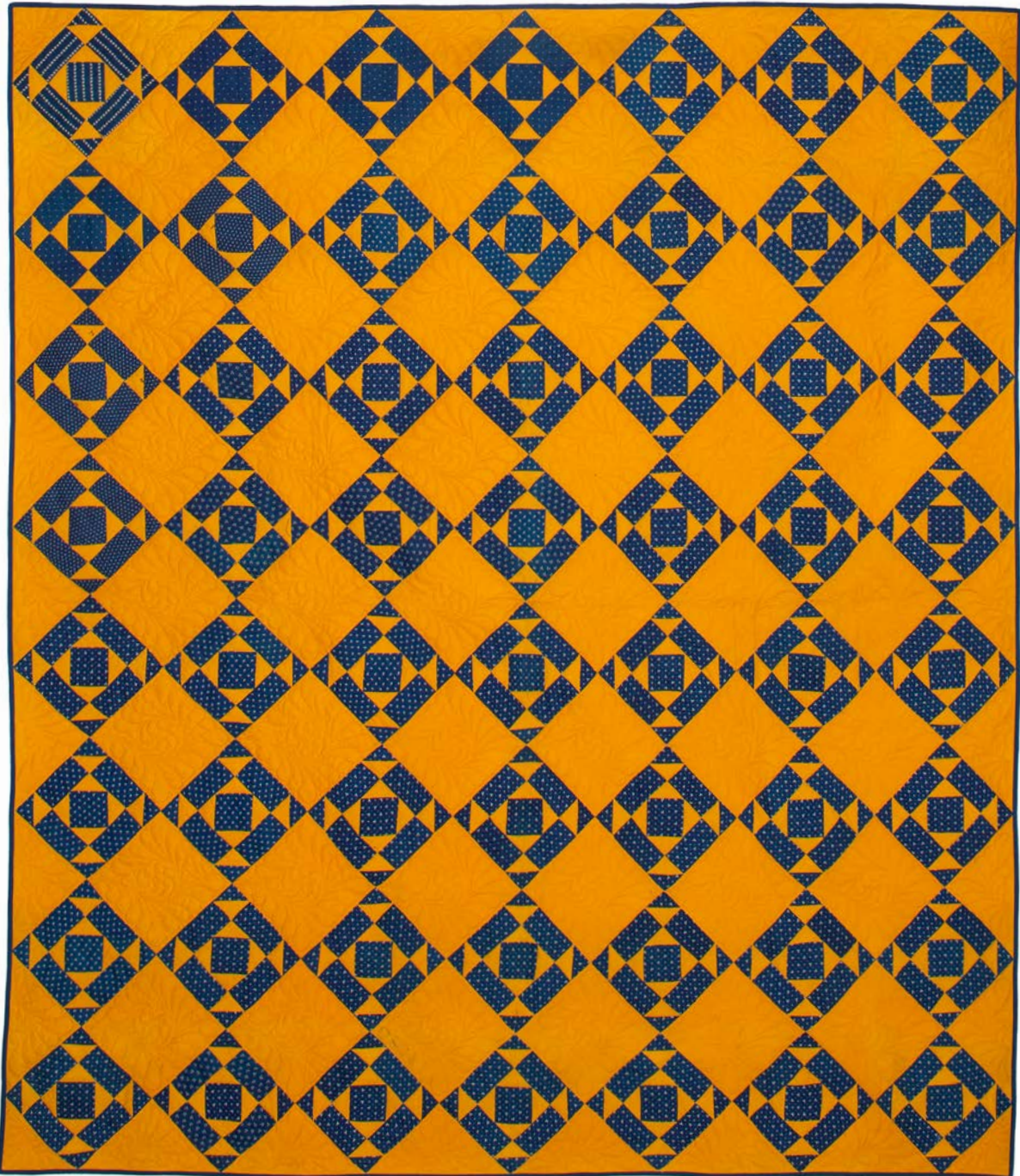
Photographer: John O'Hagan

Aiden Court

DESIGNED BY: Unknown | OWNED BY: Phyllis Hoffman DePiano

FINISHED QUILT SIZE: 80" x 91"

FINISHED BLOCK SIZE: 8" x 8"



Photographer: John O'Hagan

This classic Cheddar and navy quilt features a variation on the Puss in the Corner quilt block. A typical Puss in the Corner block is built around a solid square. The designer of this antique quilt made a clever modification to the center square, replacing it with a Square-in-a-Square unit. The on-point layout adds even more excitement! The large setting squares between the blocks are a great place to showcase some lovely quilting. Consider a soft circular quilting motif to complement the angular geometry of the blocks.

Aiden Court

SPECIAL INSTRUCTIONS:

Read through entire pattern before beginning project. Use $\frac{1}{4}$ " seam allowances with fabric right sides together. Pressing arrows are included with illustrations. Basic quilting supplies are assumed. Fabric requirements include extra yardage for shrinkage and insurance. If working with directional prints, you may want to purchase more fabric than called for. Pattern is based on an antique quilt and has been simplified as needed for ease of construction and may differ slightly from original.

WOF = width of fabric
LOF = length of fabric
HST = half-square triangle unit

FABRIC:

Fabric A: $6\frac{1}{4}$ yards solid Cheddar fabric

Fabric B: $3\frac{1}{4}$ yards navy print fabric

Backing: $7\frac{3}{4}$ yards (for 44/45"-wide) or $2\frac{3}{4}$ yards (for 108"-wide)

ADDITIONAL SUPPLIES:

Batting: 88" x 99" piece

Marking pencil

CUTTING:

From Fabric A, cut:

- (3) $12\frac{5}{8}$ " x WOF strips. Cut strips into:
 - (7) $12\frac{5}{8}$ " squares cut twice diagonally to make 28 side setting triangles (2 are extra)
- (11) $8\frac{1}{2}$ " x WOF strips. Cut strips into:
 - (42) $8\frac{1}{2}$ " squares
- (1) $6\frac{5}{8}$ " x WOF strip. Cut strip into:
 - (2) $6\frac{5}{8}$ " squares cut once diagonally to make 4 corner setting triangles
- (18) 3" x WOF strips. Cut strips into:
 - (112) 3" squares for HST assembly
 - (112) 3" squares cut once diagonally to make 224 HST for Square-in-a-Square units.
- (10) $2\frac{1}{2}$ " x WOF strips for binding

From Fabric B, cut:

- (14) $4\frac{1}{2}$ " x WOF strips. Cut strips into:
 - (224) $2\frac{1}{2}$ " x $4\frac{1}{2}$ " rectangles
- (6) $3\frac{3}{8}$ " x WOF strips. Cut strips into:
 - (56) $3\frac{3}{8}$ " squares for center.
- (9) 3" x WOF strips. Cut strips into:
 - (112) 3" squares for HST assembly

BLOCK ASSEMBLY:

1 Referring to **Diagram 1**, draw a diagonal line on wrong side of (1) **Fabric A** 3" squares. Place over **Fabric B** 3" square. Sew a $\frac{1}{4}$ " seam allowance on each side of drawn line. Cut in half on drawn line and press to make (2) **HST Units**. Trim to $2\frac{1}{2}$ ". Press seams toward dark fabric to make (2) **HST Units**. Make 224.

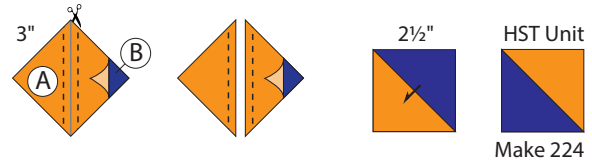


DIAGRAM 1

2 Carefully finger-fold (1) **Fabric A** 3" triangle to find center point of long side. In the same manner, finger-fold one edge of (1) **Fabric B** $3\frac{3}{8}$ " square to find center point. Match center points, pin, and sew. In the same manner, sew a **Fabric A** triangle to opposite side. Press seams toward **Fabric B** square as shown in **Diagram 2**. Sew triangles to remaining two sides to make a **Square-in-a-Square Unit**. Center and trim to $4\frac{1}{2}$ " square, making sure to trim $\frac{1}{4}$ " away from the points. Make 56.

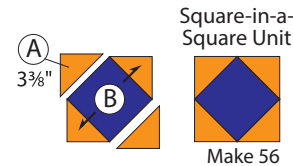


DIAGRAM 2



QUILT STREET TIP: *To make a Square-in-a-Square unit, you will be working with bias edges, which can stretch and distort. To help stabilize the fabric, press the Fabric A 3" squares with a good amount of starch or pressing spray before cutting them diagonally. Handle the long edge of each triangle carefully and press with an up-and-down motion rather than ironing with a sideways motion. Prior to sewing on the bias edge, we recommend using pins to hold the patches in place.*

Aiden Court

3 Paying attention to orientation, lay out (4) HST Units, (4) **Fabric B** $2\frac{1}{2}$ " x $4\frac{1}{2}$ " rectangles, and (1) **Square-in-a-Square Unit** as shown in **Diagram 3**. Sew together into rows. Sew rows together to make **Aiden Court Block**. Make 56.

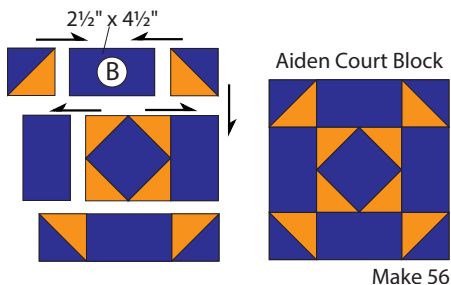


DIAGRAM 3

QUILT ASSEMBLY:

1 Paying attention to orientation, lay out blocks, **Fabric A** $8\frac{1}{2}$ " squares, **Fabric A** side setting triangles, and **Fabric A** corner setting triangles as shown.

2 Sew into rows diagonally, pressing seams away from blocks.

3 Join diagonal rows to complete **Aiden Court Quilt Top**.

FINISHING:

1 Trim selvage edges from $7\frac{3}{4}$ yards of backing fabric, fold yardage in thirds lengthwise, and cut into (3) 93" x LOF pieces. Sew pieces together along LOF; press seams to one side.

2 With backing seams running horizontally, center and layer backing, batting, and quilt top together to make a quilt sandwich; baste layers together and quilt as desired.

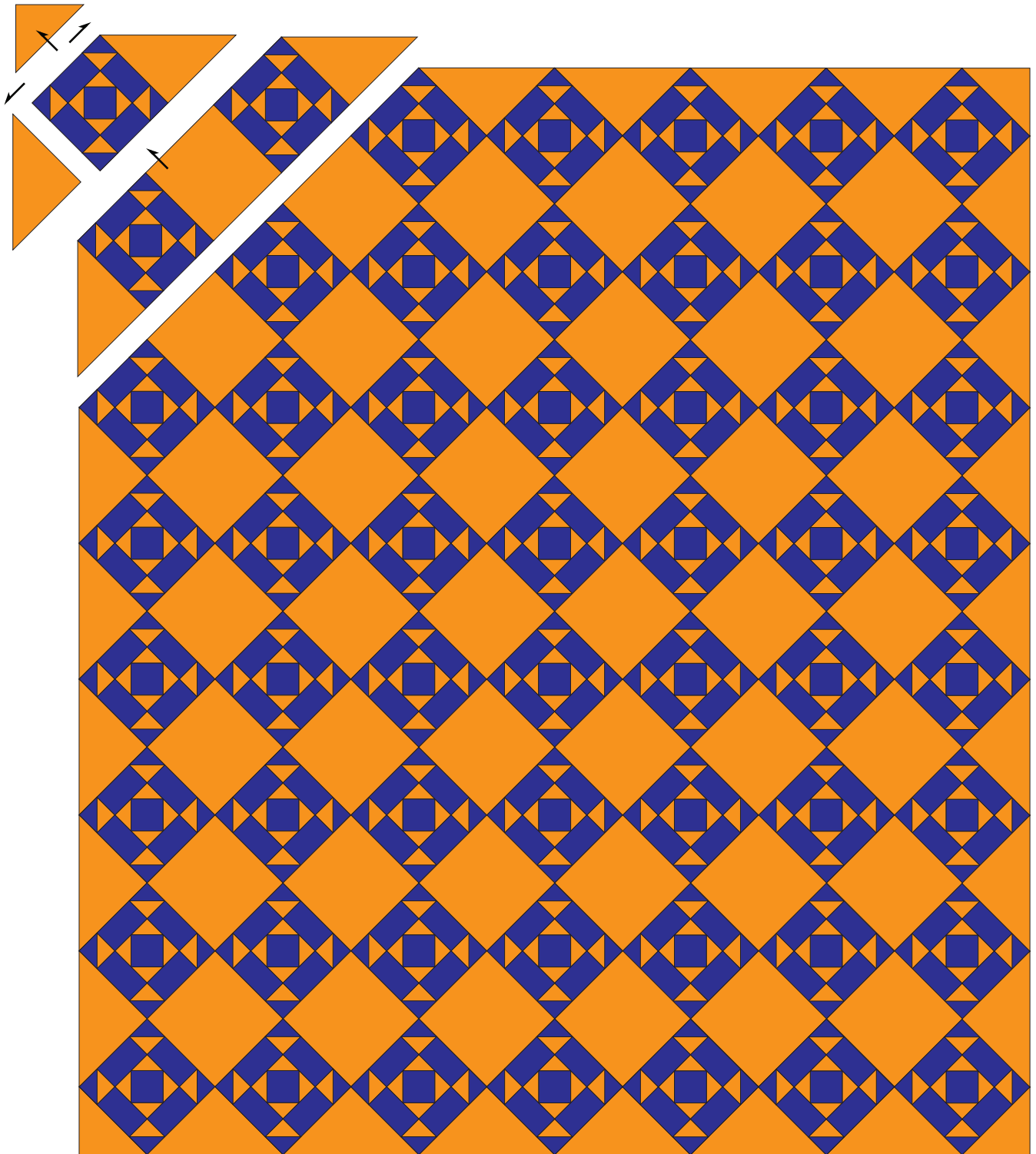
3 Using diagonal seams, make **Fabric A** binding from (10) $2\frac{1}{2}$ " x WOF strips. Fold binding in half lengthwise, matching wrong sides; press length. Sew binding to quilt top and miter corners; join binding ends as desired. Press binding away from quilt top and fold over quilt's edge to back of quilt. Hand-stitch binding in place to finish.



The timeless color combination of Cheddar and navy has been loved for generations. It has cycled to the top favorites so many times through the years. This quilt top was purchased from an antiques dealer. It is pieced entirely by hand and was recently machine-quilted. At first glance, it appears that all the blue fabrics match, but at the edge, several of the blocks have a different patterned blue fabric. Lucky the quilter who could find matching flour sacks or fabric scraps! A very interesting aspect of this quilt, which is so faint you can hardly see it, are the pencil markings on the top. The quiltmaker was apparently designing the quilting pattern, but that is as far as she got.

—PHYLLIS HOFFMAN DEPIANO

Aiden Court



QUILT ASSEMBLY DIAGRAM